

PROGETTO RELATIVO ALLA
RISTRUTTURAZIONE DI
FABBRICATO PER LA FORMAZIONE
DI N.3 APPARTAMENTI E LOCALI
PER ATTIVITA' CULTURALI E
PUBBLICHE

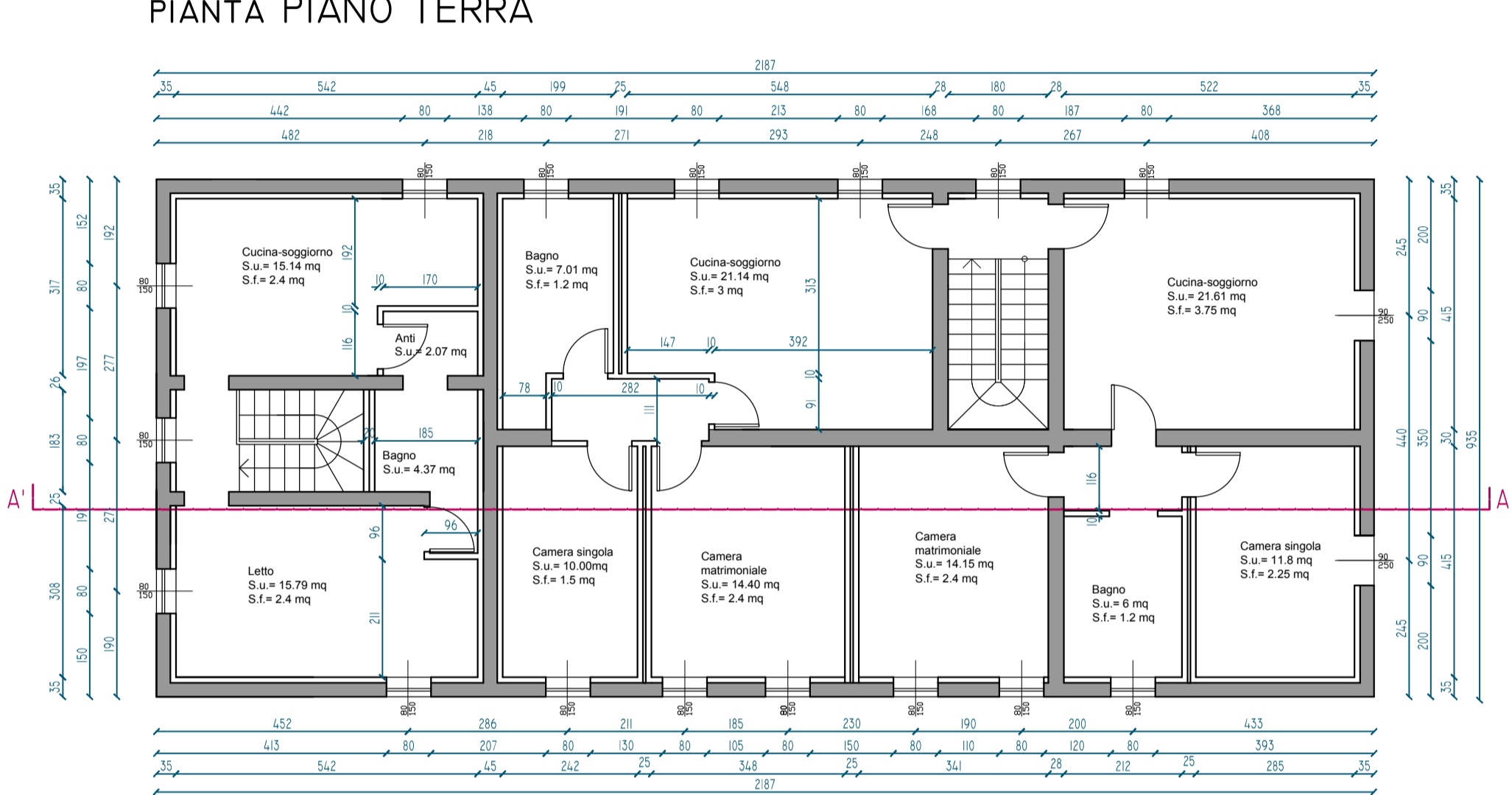
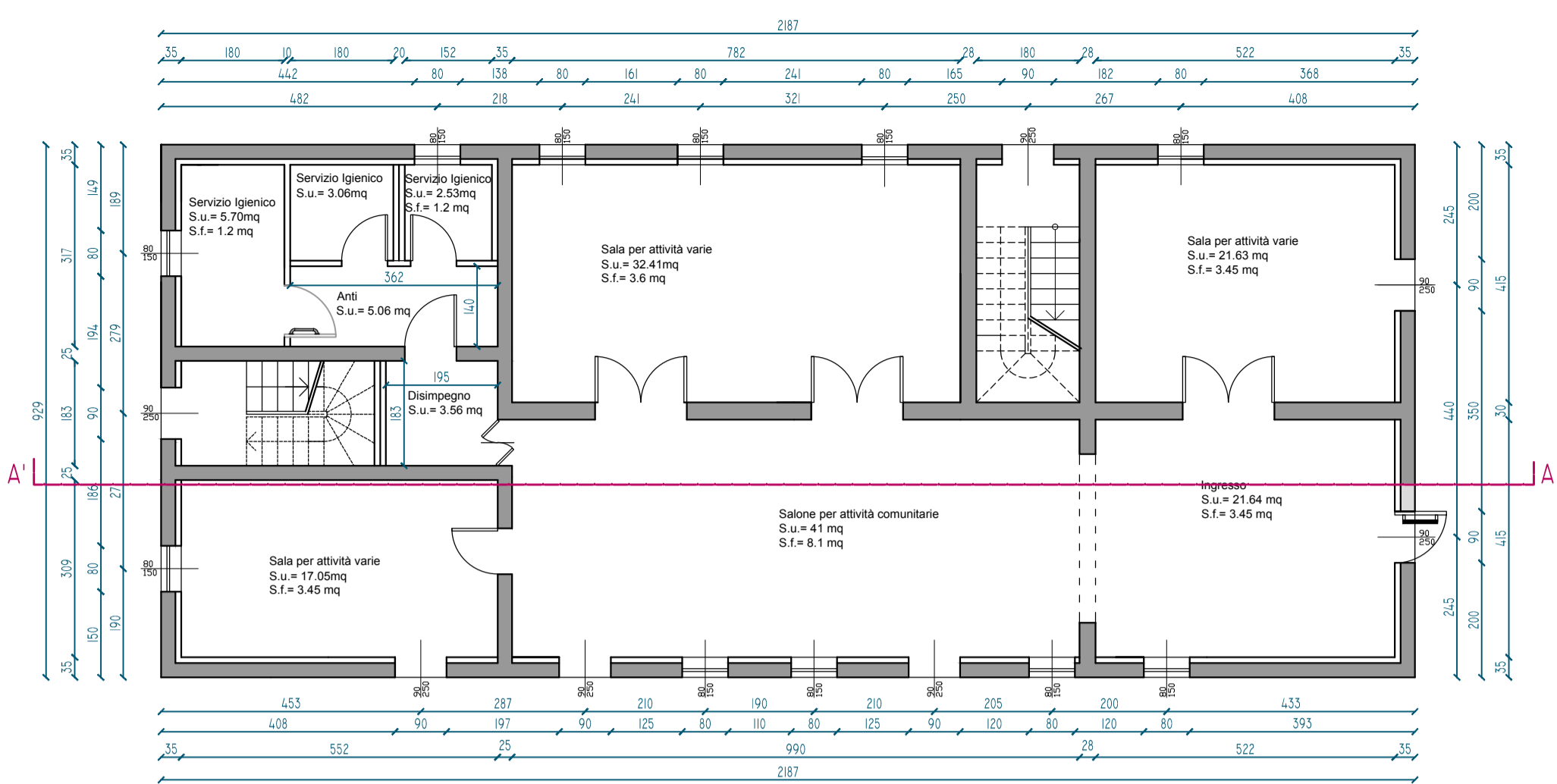
PIANO URBANISTICO ATTUATIVO
"NOSTRA SIGNORA DI FATIMA"



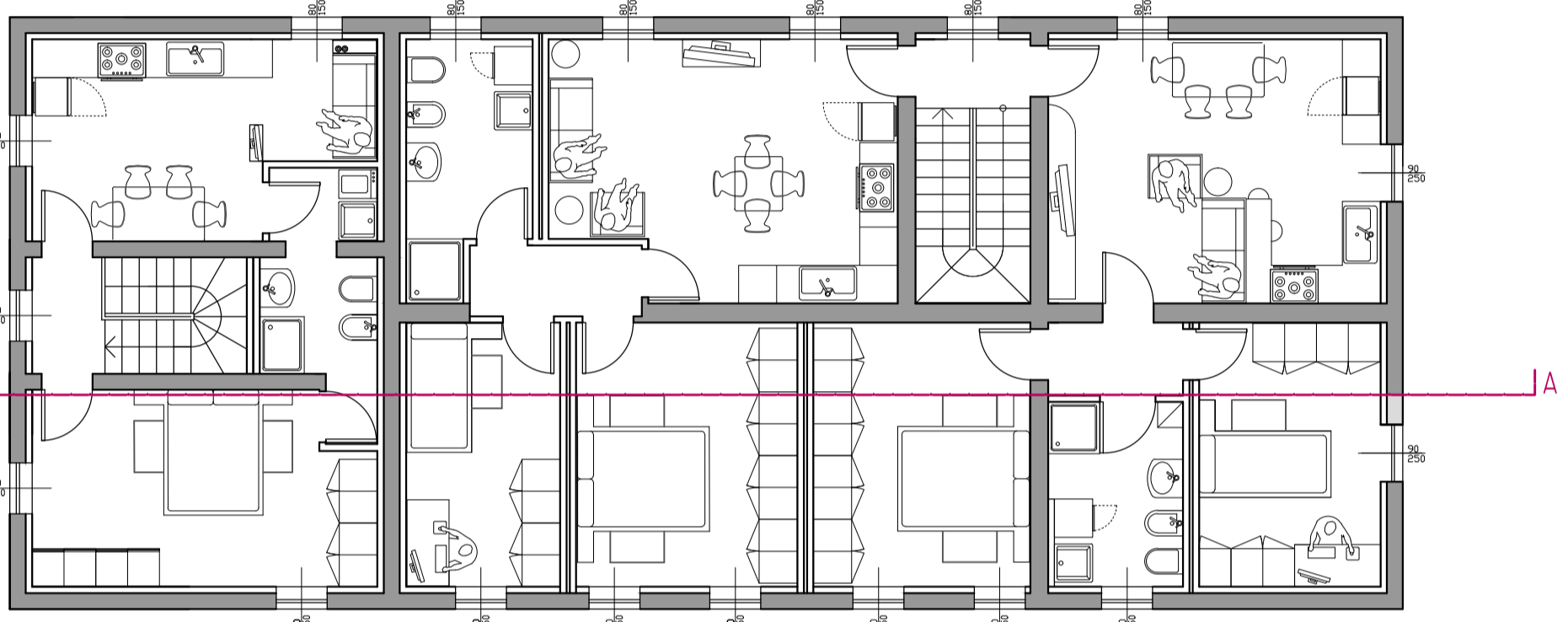
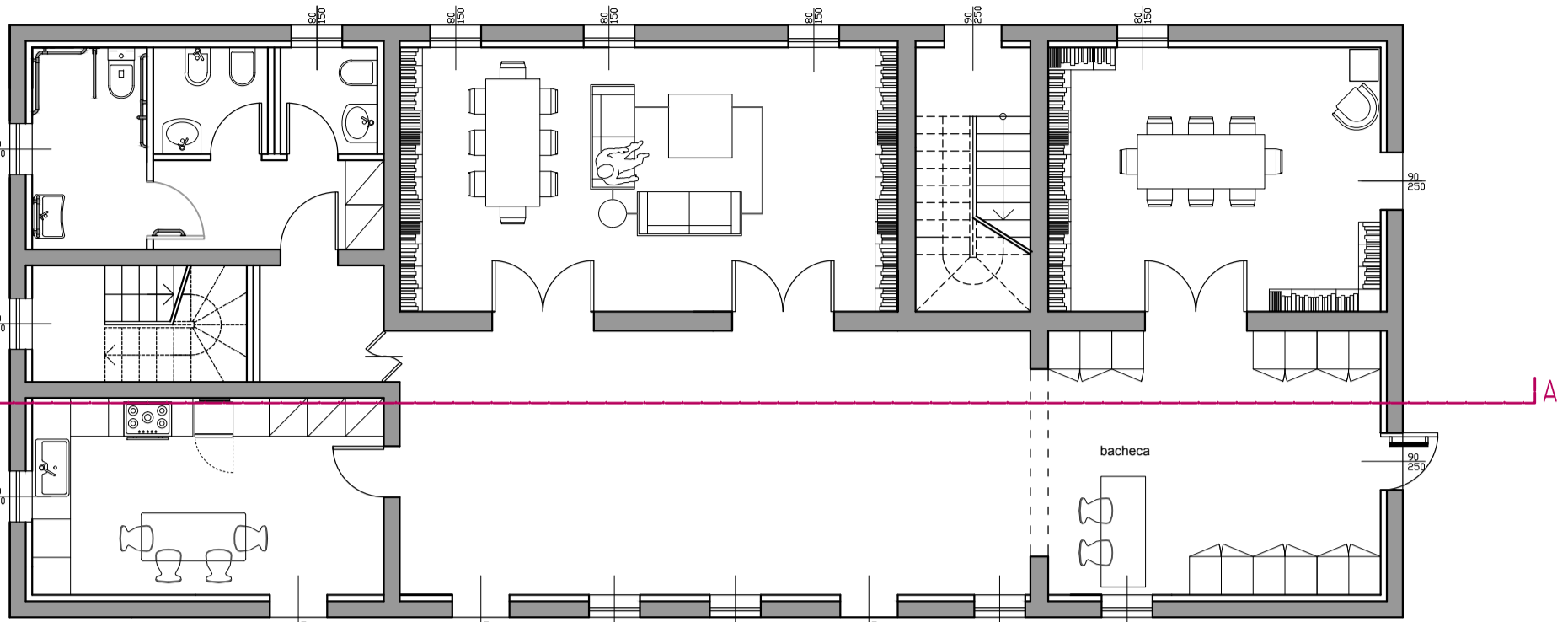
Fig.IMP. 42/51-55, 36/157
PROVINCIA MODENA
CORSO CONCORDIA S/S
S. GIOVANNI
BORGO

COMPILITENTE
PARROCCHIA NOSTRA
SIGNORA DI FATIMA

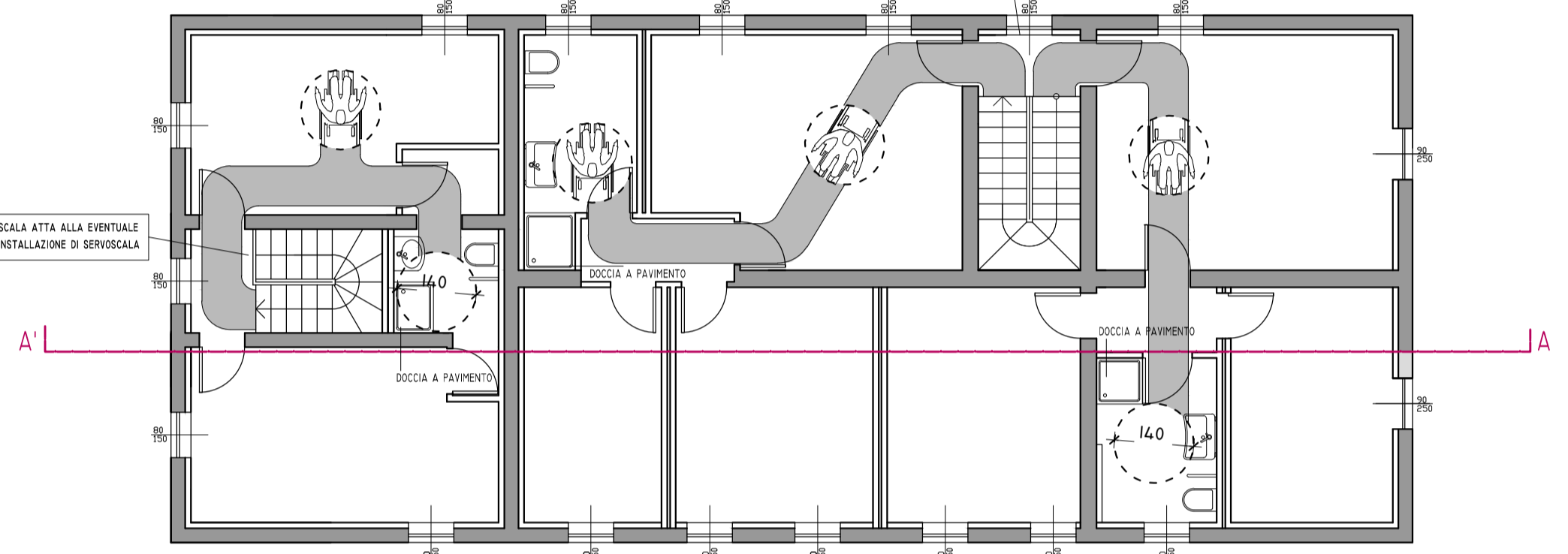
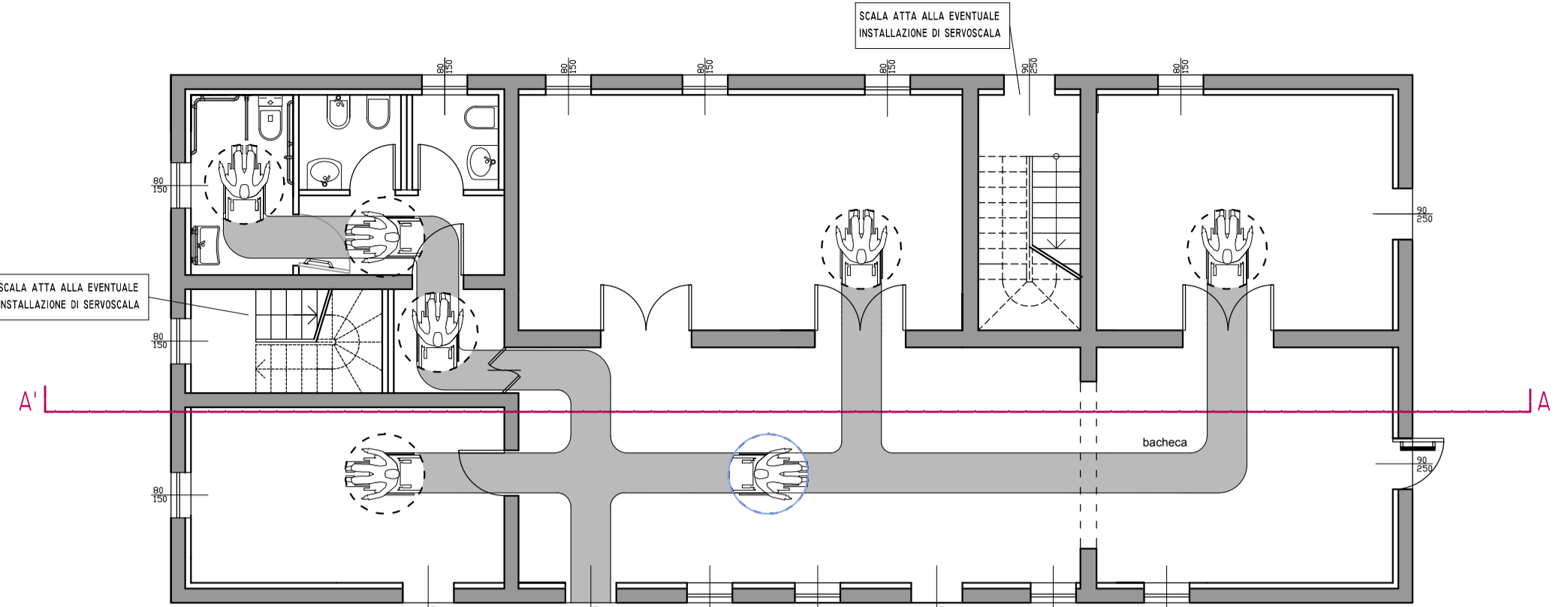
Architetto Manuele Gasparini
Via Parco 14 Concordia s/S 41033 MO Italia
Tel. 0535.55.329 Fax 0535.56.139 E-mail 3355259919
spaccio@libero.it Albo degli Architetti n°352
GSP.MNE.G1113/09518@PVA 02964360362



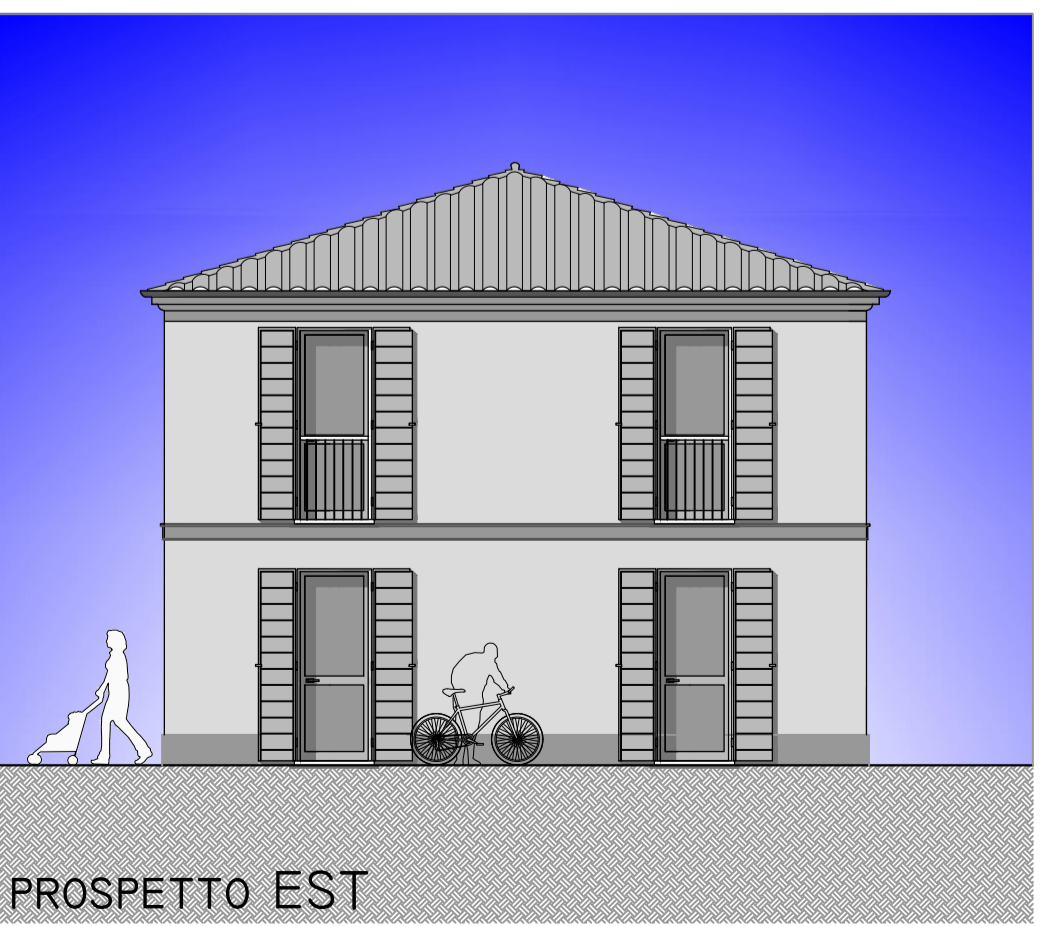
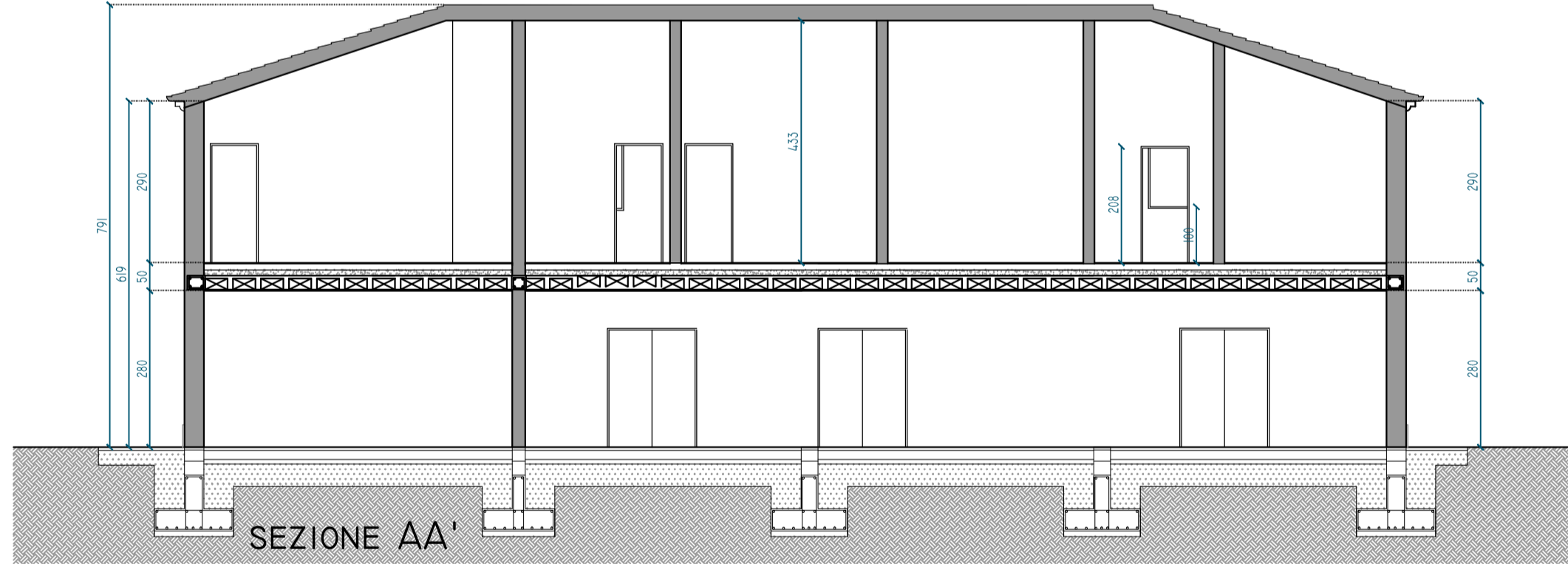
PIANTA ARREDO



L. 13/89



STRUTTURALE



IMPIANTO FOGNARIO SCALA 1:100

